

The Belltown Antique Car Club Presents The

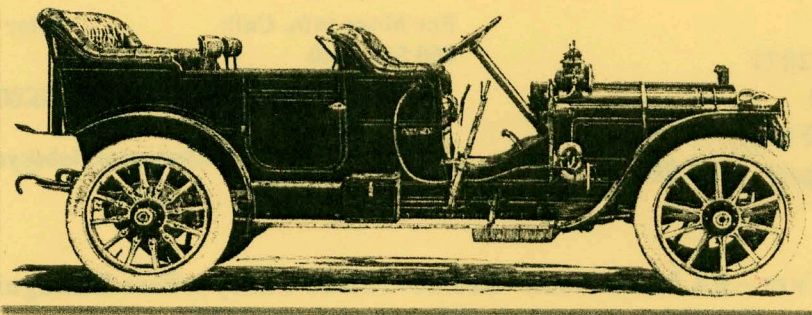


54th Annual Motor Car Meet

Haddam Neck Fair Grounds

Haddam Neck, CT

Sunday August 1, 2021



The Belltown Antique Car Club has been celebrating
antique cars for 55 years.

www.belltownantiquecarclub.org

Rain or Shine

Mask required

This year we will honor cars thru 1981

Bring your antique car or truck and enjoy the day.

Classes and Directions on the back

Show Cars driver and passengers- \$10.00

Spectators - \$5.00

**All Stock Automobiles Thru 1981 Will Be
Judged**

Belltown Antique Car Club 54th Annual Show

Note to GPS users:

You must use East Hampton's ZIP Code 06424. Using Haddam's ZIP Code will take you across the river, 20 miles away.

From the **Middletown-Portland Bridge**, follow Route 66 East for 5.5 miles to the intersection of Route 151 South. Follow Rt 151 South for 3.4 miles to the intersection of Haddam Neck Road on the Right. Follow Haddam Neck Road for 1 mile to the Fair.

From the **East Haddam Bridge**, take an immediate left onto Route 149 North. Follow Route 149 for 3.3 miles to the intersection of Route 151 North. Follow Route 151 for 4.3 miles to the intersection of Haddam Neck Road on the Left. Follow Haddam Neck Road for 1 mile to the Fair.

41° 30 44.75 N and 72° 30 56.21 W

Google maps

Date- Sunday August 1, 2021
Public Admission - \$5.00
(Children under 12 Are Free)
Cars, driver and passengers \$10.00

For More Info. Call:
860 510 3340

Peter Christianson

www.belltownantiquecarclub.org

Or Email

[Belltowncarclub@yahoo.com](mailto:belltowncarclub@yahoo.com)

Registration For Show Cars – 8A.M. to Noon –\$10.00- Please Carry a Fire Extinguisher
Judging- Noon to 3 P.M. Trophies Awarded – Shortly After 3 P.M.

Flea Market - \$25.00 Per Space (20X20) Car Corral \$20.00 Opens at 8 A.M.
Special Notes – Please No Bicycles or Pets. Children should be accompanied by an adult
Refreshment – Food Venders Available At The Field

24 Classes – Three Trophies per Class

A Up to 1927 All (Include Model T)
B Model A Fords Close *
C Model A Fords Open *
D Full Classics up to 1930 All
E Full Classics 1931 - 1948 All
F 1928 - 1936 Closed * except model A
G 1937 to 1942 Closed
H 1928 to 1942 Open
I 1946 to 1951 Closed
J 1952 to 1956 Closed
K 1957 to 1961 Closed
L 1946 to 1961 Open
M 1962 to 1965 Closed
N 1966 to 1969 Closed
O 1962 to 1969 Open
P 1970 to 1973 All
Q 1974 to 1981 All
R Sports cars Up to 1964

S Sports cars 1965 to 1981
T Light Commercial (up to ¾ ton) up to 1952
U Light Commercial (up to ¾ ton)1953 to1971
V Light Commercial (up to ¾ ton)1973 to1981
W Heavy Commercial up to 1981
X Fire Trucks & Military Vehicles

**) Excluding car base light trucks which are classified as light truck class T*
****) Reference Official Classic Car Club of America list of Full classic car makes and model*

Please Note Vehicles Newer Than 1980 Will Not Be Allowed On The Field. Hot Rod vehicles are not judged