

# The Belltown Antique Car Club



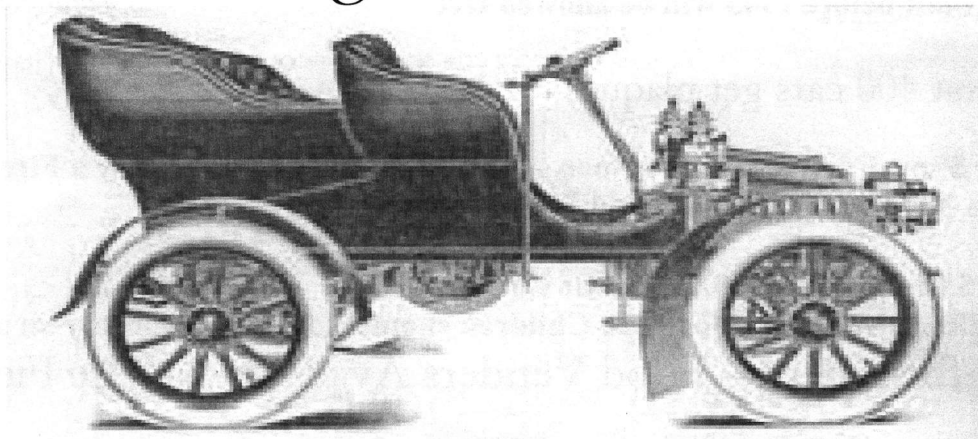
Presents The

45<sup>th</sup> Annual Motor Car Meet

Haddam Neck Fair Grounds - Haddam Neck, CT

Sunday

August 7, 2011



*Dodge  
Hartford*

[www.belltownantique  
carclub.org](http://www.belltownantiquecarclub.org)

**Rain or Shine**

The belltown Antique Car Club has been celebrating antique cars for 45 years. This year we will honor cars thru 1971 All Stock Automobiles Thru 1971 Will Be Judged

Bring your antique car or truck and enjoy the day. Classes and Directions on the back

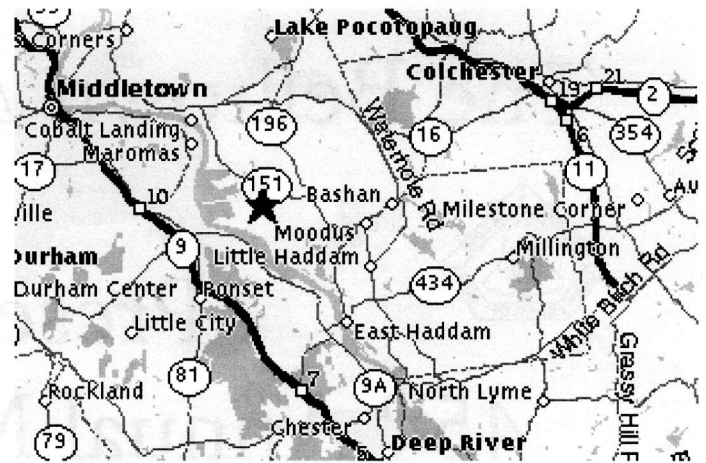
Show Cars and driver \$5.00  
Cars built before 1943  
allowed free admission for car and driver  
Spectators - \$5.00



## Belltown Antique Car Club

### 45th Annual Show

Take Rt. 66 East From Middletown or Rt. 66 West From Rt. 2 in Marlborough to Cobalt, Then Take Rt. 151 South, Go About 3 Miles and Turn Right On Haddam Neck Road. Then Follow The Signs To The Fair Grounds About 1 Mile On The Left



Date- Sunday August 7, 2011

For More Info. Call:

Peter Christianson

**860 267 8394**

Public Admission - \$5.00 Seniors -\$3.00

(Children Under 12 Are Free)

Cars and trucks built before 1943 will be allowed free admission

First 400 cars get plaques

[www.belltowntantiquecarclub.org](http://www.belltowntantiquecarclub.org)

Or Email

[Belltowncarclub@yahoo.com](mailto:Belltowncarclub@yahoo.com)

Registration For Show Cars – 8A.M. to Noon – Still only \$5.00- Please Carry a Fire Extinguisher  
Judging- Noon to 3 P.M. Trophies Awarded – Shortly After 3 P.M.

Flea Market - \$15.00 Per Space(20X20) Car Corral \$10.00 Opens at 8 A.M.

Special Notes – Please No Bicycles or Pets. Children should be accompanied by an adult

Refreshment – Food Venders Available At The Field

### *23 Classes – Three Trophies Per Class*

- |   |   |
|---|---|
| A Up to 1918 open and closed                | M 1946 to 1960 open                                       |
| B Model T Fords open and closed             | N 1961 to 1971 closed                                     |
| C 1919 to 1929 open and closed              | O 1961 to 1971 open                                       |
| D Classic Cars 1925 to 1934 open and closed | P Wooden Bodied Cars                                      |
| E Classic Cars 1935 to 1948 open and closed | Q Corvettes 1953 to 1971                                  |
| F Model A Fords open                        | R Thunderbirds 1955 to 1971                               |
| G Model A Fords closed                      | S Light Commercial (up to $\frac{3}{4}$ ton) up to 1945   |
| H 1930 to 1935 closed                       | T Light Commercial (up to $\frac{3}{4}$ ton) 1946 to 1971 |
| I 1936 to 1942 closed                       | U Heavy Commercial (over $\frac{3}{4}$ ton)               |
| J 1930 to 1942 open                         | V Fire Trucks   |
| K 1946 to 1954 closed                       | W Military Vehicles                                       |
| L 1955 to 1960 closed                       |   |

Display areas (non-judged) for street rods and cars 1972-1975

**Please Note Vehicles Newer Than 1975 Will Not Be Allowed On The Field.**

**Hot rod Vehicles will be admired but not judged.**